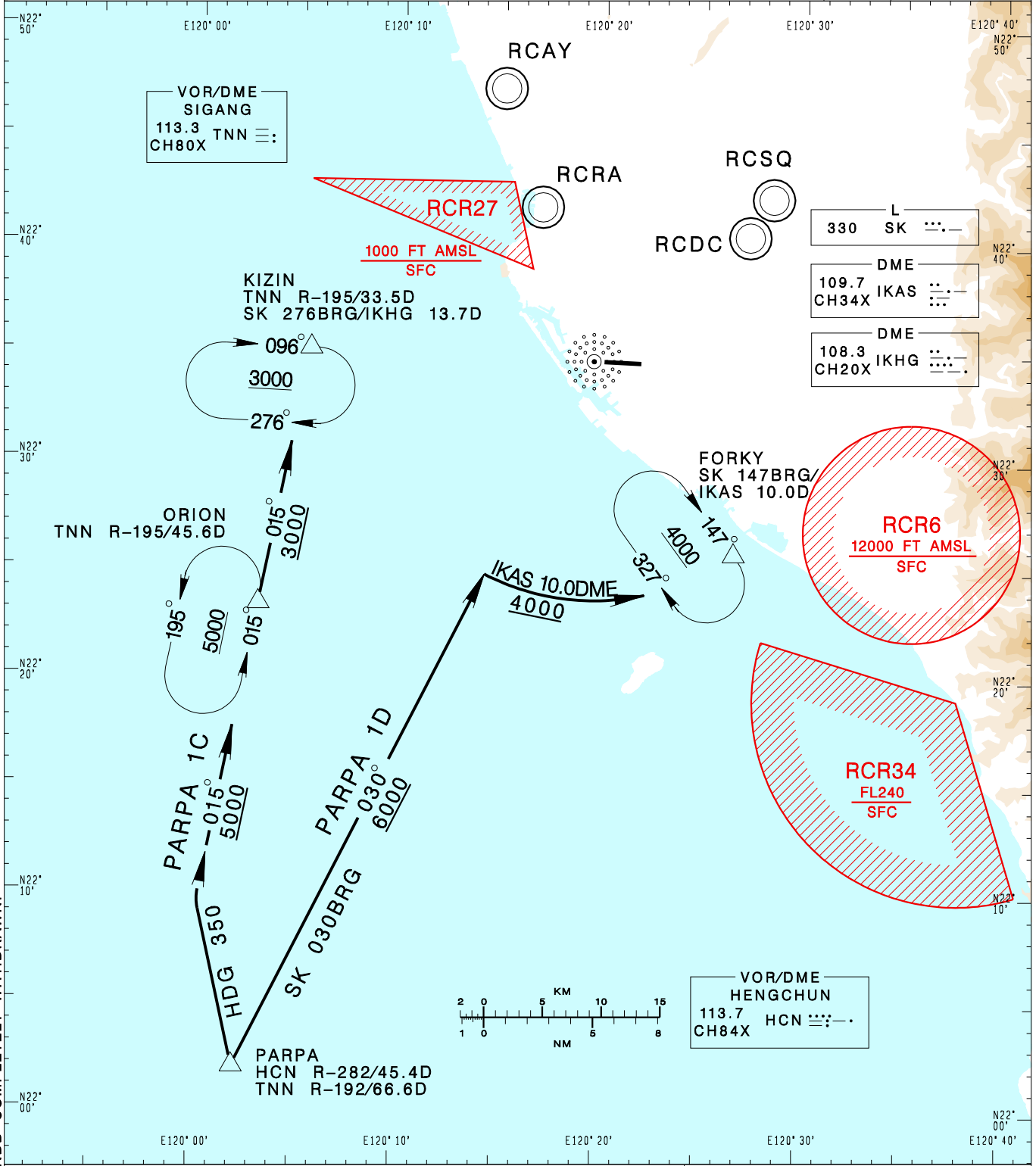


高雄國際機場
KAOHSIUNG INTL AD

RCKH STAR
PARPA 1C(RWY09)
PARPA 1D(RWY27)

TAIPEI ACC 127.9	129.1	KAOHSIUNG APP 124.7 125.7	ATIS 127.8	VAR 4° W ↑ ↓			
Apt Elev: 32'		Trans Level: FL130				Trans Alt: 11,000'	
BEARINGS ARE MAGNETIC; DISTANCES ARE NAUTICAL MILES; ELEVATIONS, HEIGHTS IN FEET							



CHANGES: KW NDB COMPLETELY WITHDRAWN.

PARPA ONE CHARLIE ARRIVAL
Depart PARPA, HDG 350 to track TNN R-195 to KIZIN.

PARPA ONE DELTA ARRIVAL
Depart PARPA, track SK 030BRG to IKAS 10.0 DME arc to FORKY.

NOTE
PARPA 1C: ATS surveillance required.